



KEY FEATURES

- **Fuel Efficient** (Approx 65% fuel saving over traditional DSV)
- Detailed fuel figures available on request
- **Shallow Draft**
- **Accepted Safety Case** (NOPSEMA & DMP)
- **Emergency Hybrid Capability**
- **Twin Hull Providing Stable Platform**
- **4 Point Mooring System**
- **Caters for up to 40 Personnel**
- **Dedicated ROV Control Room**
- **Dedicated Dive Control Room**
- **Integrated Dive Systems**
- **Integrated Survey and Positioning System**
- **2 Built-in Decompression Chambers**
- **Fire Fighting Capabilities** (FIFI 1)
- **Deck Crane 6-16 Tonnes**
- **45 Tonne A-Frame** (Removable)

GENERAL INFORMATION

BUILT:	Singapore 2014
OWNER:	Bhagwan Marine
CLASSIFICATION:	ABS - ✕A1, DSV AIR, FFV 1, Offshore Support Vessel, SPS, ©, ✕AMS, ✕ACCU, ✕DPS-2, ENVIRO, GP, RRDA, UWILD, CRC, RW Certified to IMDG Code
CLASS TYPE:	ABS Class Air DSV (Catamaran) Diesel Electric
IMO NUMBER:	9680968
CALL SIGN:	VHCO

DIMENSIONS

LENGTH OVERALL:	57M
BEAM:	16.00M
DRAFT:	3.25M (Max)
GROSS TONNAGE:	1475GT
DEADWEIGHT:	250 MT

PERFORMANCE

FULL OPERATING SPEED:	11 Knots (Approx.)
CRUISE:	9 Knots

CAPACITIES

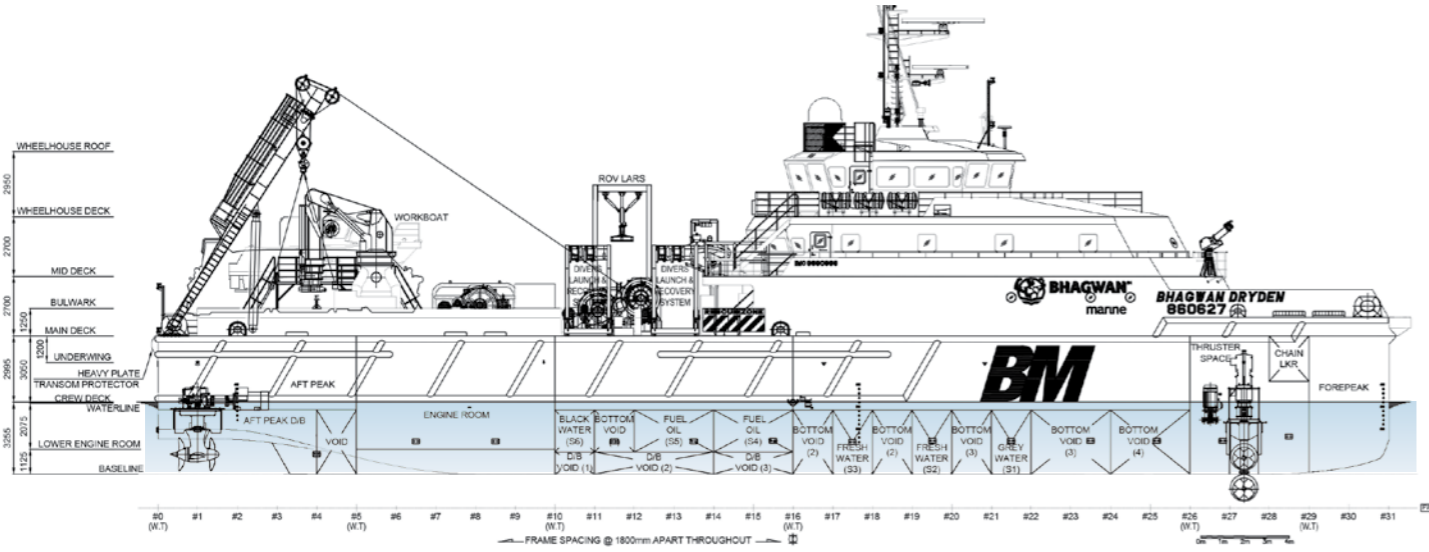
CARGO:	150 Tonnes (Approx.)
FUEL OIL:	130 M ³ (Approx.)
POTABLE WATER:	70m ³ plus water making facilities
DECK RATING:	10.0 Tonne M ²

CARGO DECK

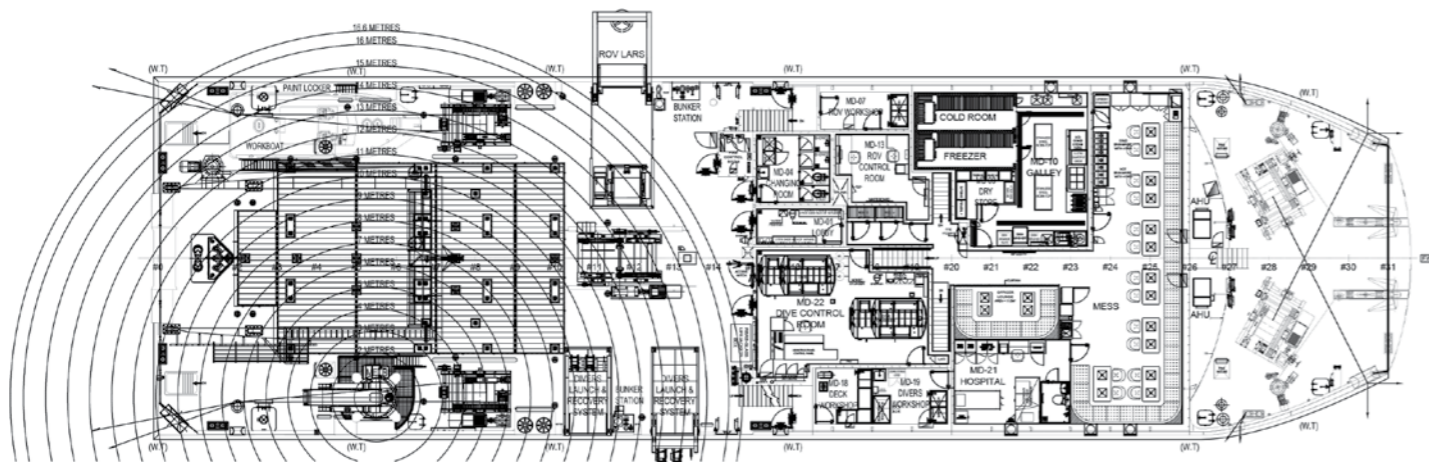
CLEAR DECK AREA:	260 M ² (Approx.)
DECK LOAD:	10.0 T/M ²

BHAGWAN DRYDEN

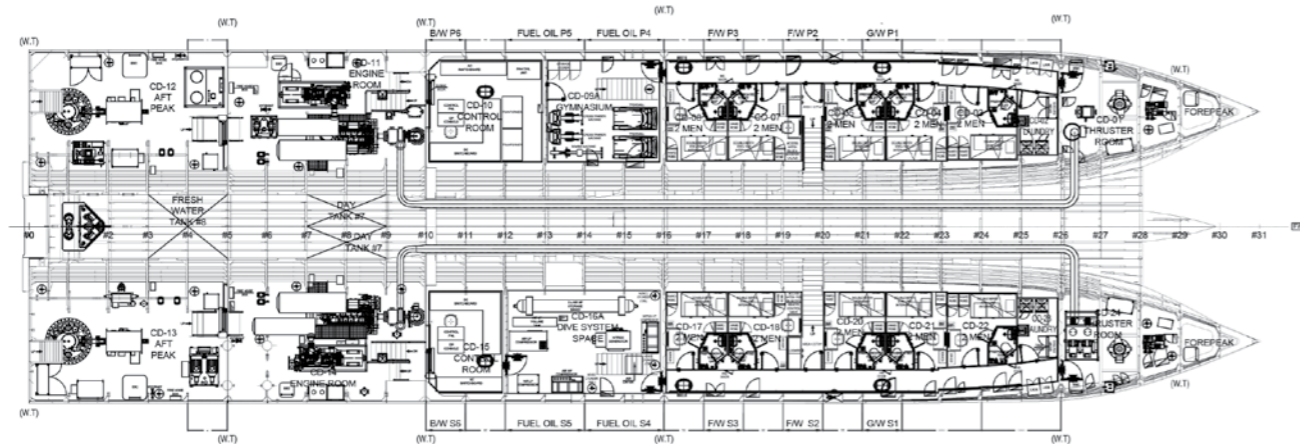
57m ROV & Air Dive Support Vessel



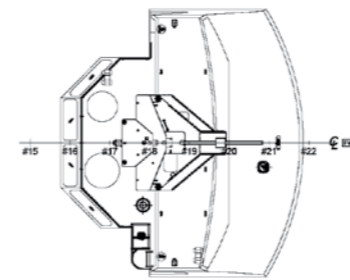
PROFILE



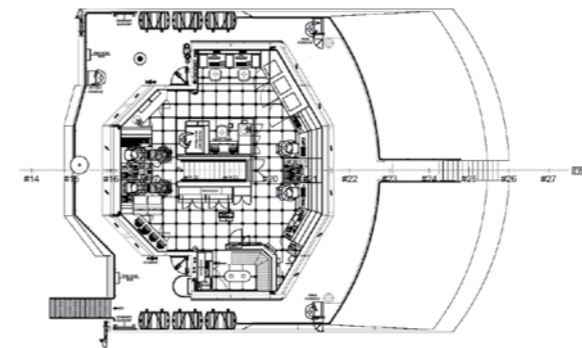
MAIN DECK (6,250 A.B.L)



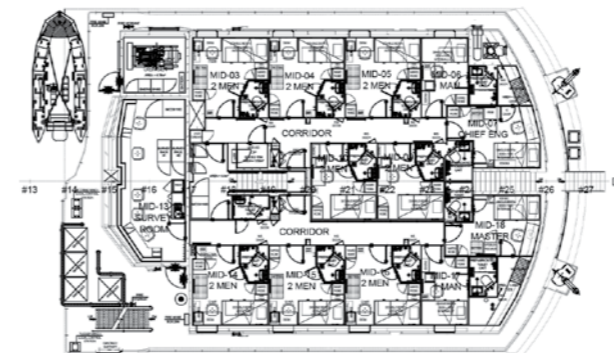
CREW DECK (3,200 A.B.L)
(20x2 MEN = 20 MEN)



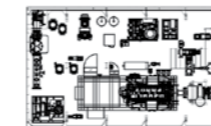
WHEELHOUSE TOP
(14,600 A.B.L)



WHEELHOUSE DECK
(11,650 A.B.L)



MID DECK
(8,950 A.B.L)



LOWER ENGINE ROOM
(1,125 A.B.L)

TECHNICAL SPECIFICATIONS

HULL

Twin Keel Catamaran Steel Hull
16.0M Open Transom Inside Safety Rails
Rescue Zones Port & Starboard

MAIN MACHINERY

2 x Schottel STP 550 Stern Azimuth Thrusters
2 x Bow Thrusters, TM300RT Thrustmasters (Tunnel/Azimuth)
2 x 950 kW Cummins QSK38-DM
2 x 400 kW Cummins QSK19-DM
2 x 65kwhr, 48VDC Battery Systems connected to Main DC Bus System giving vessel unique ability to operate on battery power for 20 minutes at 4 knots
1 x Aspin Kemp & Associate Power Management System

DECK EQUIPMENT

DECK CRANE: HS Marine Crane Model AKC 245HE4
16 Tonne SWL @ 7.5m
6 Tonne SWL @ 16m

WORK WINCH: (ELECTRICAL) Double Drum Waterfall
Upper Drum 20 Tonne (100M x 30MM)
10 Tonne High Speed
Lower Drum 20 Tonne (1200M x 32MM Wire)

POINT MOORING: (ELECTRICAL) EMS 4 Point Mooring System
Electric Zone 2 Explosion Proof
Drum Pull First Layer 37MT
Top Layer 5.3M/T / 0-73M/Min
Drum Brake Holding 100M/T (First Layer)

ANCHORS: 4 x 2,000kgs Delta Flipper

'A' FRAME: 45 Tonne (Harbour) with Integral
8 Tonne Winch (Electric)
100M x 20M Wire
22.5 Tonne Man Riding
Able to Recover Hyperbaric Life Boat (HLB / SPHL)

AVAILABLE POWER: 2 x 250A maximum 3-phase / Neutral hard wired connections

AFT DECK: 10 x 32A 3-phase (no Neutral) 415v sockets
6 x 15A 240v single phase sockets

STERN ROLLER: 50 Tonne

SHARK JAWS AND ANCHOR HANDLING PINS: 100 Tonne

MISCELLANEOUS EQUIPMENT

MARPOL COMPLIANT: Hamann Sewage Treatment Plant
SULLAGE TANK: Capacity 30m³
OILY WATER SEPARATOR: Boss
GAS DETECTION MONITORING SYSTEM: Detcon

WHEELHOUSE

GYROCOMPASS: 3 x Raytheon STD22
AIS: Furuno FA-150
VDR: Furuno VR-3000
RADAR: Furuno, FAR-2837S and FAR-2827D
ECHO SOUNDER: McMurdo S4 & E5
AUTOPILOT: Raytheon Pilotstar-D
GMDSS: Furuno GP-150
SART & EPIRB: McMurdo S4 & E5
NAVTEX RECEIVER: Furuno NX-700A
GPS: Furuno GP-150
INMARSAT C EQUIP: SAILOR 6110 SAT-C
V-SAT: KNS SuperTrack Z10
CCTV SYSTEM: 18 PTZ Cameras (IMCOS)



BHAGWAN DRYDEN

57m ROV & Air Dive Support Vessel

TECHNICAL SPECIFICATIONS

(CONTINUED)

REMOTELY OPERATED VEHICLE

- FULLY INSTALLED WORK CLASS ROV (REMOVABLE):** 150hp Hydraulic System
Depth Rating 1500msw
Tether Management System (TMS)
Schilling Manipulators
- Seven Function (T3 / Conan)
 - Five Function (Rigmaster)
- PROVISION FOR:** Additional or alternate ROV's as per client's requirements

DIVING SYSTEMS

- DEPTH RATING:** 50m
- DIVE LARS:** 2 X Pommec Launch & Recovery Systems
- CHAMBERS:** 2 X Hytech 72" Twin Lock Deck Decompression Chambers
- CLASSIFICATION:** Air / Nitrox Diving System Built to ABS Classification Rules Enabling A1 Class Notation

SURVEY & INSPECTION SYSTEMS

- VIDEO:** MOXA - Fibre Optic Video and Data Sharing Network Between Survey, Diving and ROV
- MBES:** R2Sonic / Reson Hull Mounted Flange
- OFFICE:** Dedicated Fully Equipped Office c/w 4x Workstations

DYNAMIC POSITIONING SYSTEMS

- DP:** Kongsberg K-POS DPS2 (IMO DP Class 2) - Sensors
- POSITIONING:** Veripos LD5-GG2 DGNSS System
Kongsberg RADius Relative Positioning System
- USBL:** Sonardyne Ranger 2 Pro USBL (retractable)
- MRU:** Kongsberg, 3 x units
- GILL WIND SENSOR:** 3 x units
- GYROCOMPASS:** 3 x Raytheon STD 22

ACCOMMODATION

- MID DECK:** Master's Cabin with Ensuite
Engineer's Cabin with Ensuite
8 x 2 Berth Cabins with Ensuite
2 x 1 Berth Cabins with Ensuite
Large Client Office / Survey Room
- MAIN DECK:** Large Galley
Dining Area for 30
Hospital
2 x Showers, 2 x Toilets & Change Room
Laundry
Workshops / Gear Store
Dive / ROV Control Office
- PORT HULL:** 5 x 2 Berth Cabins with Ensuite
All Cabins include TV / DVD
Laundry
Fully Equipped Gymnasium
- STARBOARD HULL:** 5 x 2 Berth Cabins With Ensuite
Laundry
- ALL:** All Cabins incl. Sat TV / DVD & Internet



154 Connell Road
Fishermans Wharf
Geraldton WA 6530

T: +61 8 9965 9700
E: commercial@bhagwanmarine.com
W: bhagwanmarine.com

